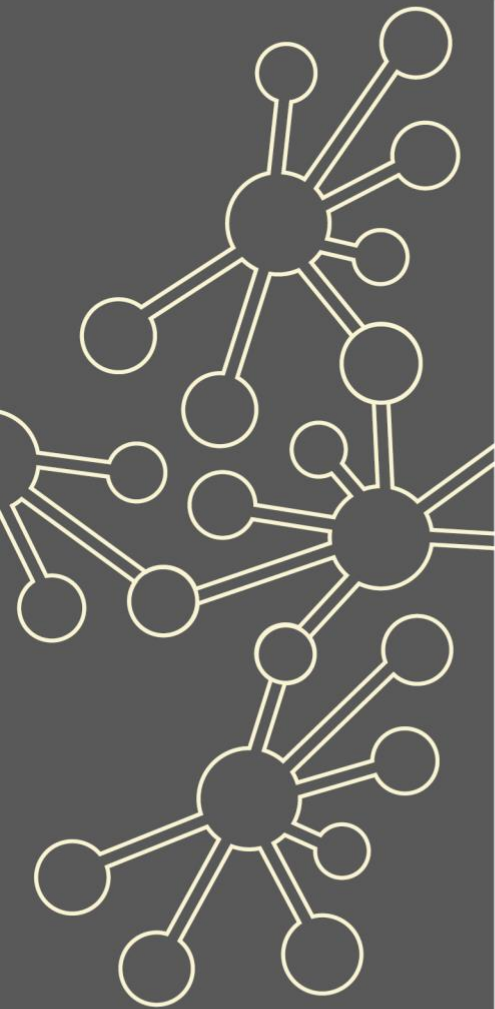


Specialist Knowledge for Teaching Mathematics – Primary Early Career Teachers

Maths Hubs Network Collaborative Projects 2021/22

NCP21-28



Outline

This project is designed to support primary early career teachers (teachers in their first two years of teaching) in developing specialist knowledge for teaching mathematics, thus enabling them to understand, teach and support pupils in maths in the classroom.

Details

What is involved?

At a local level, Work Groups will explore one of the following themes:

- designing effective learning and teaching in maths (building early number concepts)
- designing effective learning and teaching in maths (additive reasoning)
- designing effective learning and teaching in maths (multiplicative reasoning).

Participants will work deeply on one area of maths, drawing in the associated pedagogy, and activities will include lesson analysis and lesson design. This programme will take place across the equivalent of four days.

Who can take part?

This programme is designed for primary early career teachers (those in their first or second year of teaching).

What are the benefits?

Participants will:

- ✓ plan and teach a carefully sequenced and coherent area of maths
- ✓ appreciate the key ideas underpinning the area of maths being taught
- ✓ understand key principles and approaches associated with teaching for mastery
- ✓ understand approaches to assess pupils' prior learning, so that learning sequences take this into account
- ✓ make appropriate use of representations to expose the structure of the maths being taught.

What is the cost?

The SKTM – Primary Early Career Teachers project is fully funded by the Maths Hubs Programme so is free to participating schools.

Covid-19 Recovery

Many positive lessons were learnt from online collaboration during Maths Hubs activity in 2020/21. These will be built upon in 2021/22.

As the impact of the pandemic hopefully recedes, the result for Maths Hubs work will be a blend of face-to-face activities and frequent online collaboration.



The wider context

'Teachers deserve high quality support throughout their careers, particularly in those first years of teaching when the learning curve is steepest... However, too often, new teachers have not enjoyed the support they need to thrive, nor have they had adequate time to devote to their professional development. The Early Career Framework (ECF) underpins an entitlement to a fully-funded, two-year package of structured training and support for early career teachers linked to the best available research evidence.'

– ECF (Jan 2019)

This project aims to offer high quality maths support for early career teachers, recognising the requirements of the ECF and the impact of Covid on their ITT experience. The ECF underpins what all early career teachers should be entitled to learn about and learn how to do based on expert guidance and the best available research evidence. As is the case for other professions, areas covered in initial training will be covered in greater depth as part of induction as teachers continue their journey to becoming experts. The work in this project will be in line with this, with an emphasis on standards 2, 3 and 4.

Expectations of participants and their schools

Participants and their schools must be able to commit to the full academic year's programme. This is likely to involve some face-to-face activity alongside online collaboration.

About the Hub

London Central and NW Maths Hub works across the London boroughs of Barnet, Camden, Enfield, Haringey, Islington and Westminster. It is one of 40 Maths Hubs in England, working together within the Maths Hub Programme, which began in 2014. You can read more about the Maths Hub [here](#).

A Work Group brings senior leaders and maths teachers together multiple times during the school year, rather than just being a one-off course. There is a common aim which is to research, develop, practise and recognise best practice. The emphasis is on collaborative, exploratory, evidence-based professional development.

If you are interested in this Work Group, please register [here](#). We will then be able to send you the relevant dates and details of this Work Group for 2021-22.

