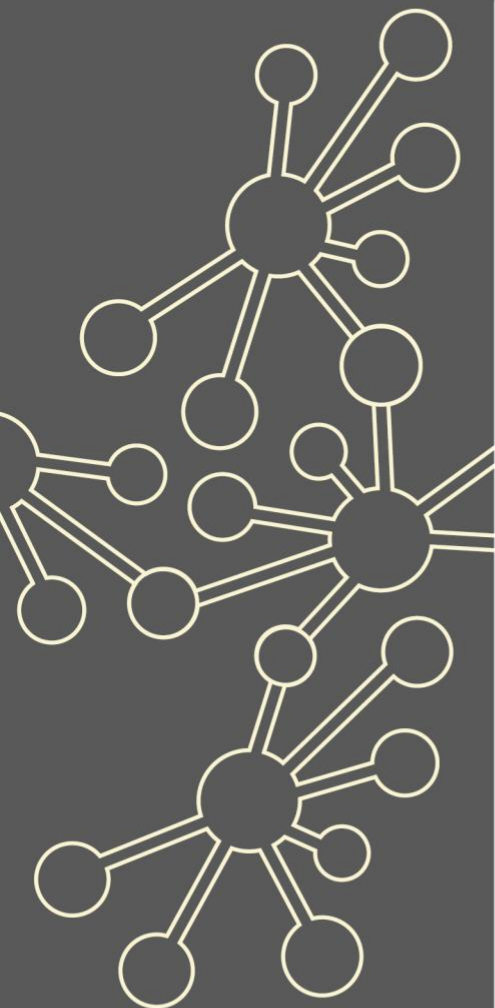


Specialist Knowledge for Teaching Mathematics – Primary Teaching Assistants

Maths Hubs Network Collaborative Projects 2021/22

NCP21-27



Outline

This project is designed to support primary teaching assistants in developing specialist knowledge for teaching mathematics, thus enabling them to understand, teach and support pupils in maths in the classroom.

Details

What is involved?

The programme will focus on the following mathematical areas:

- What is effective in the learning and teaching of mathematics?
- Number sense (part 1)
- Number sense (part 2)
- Additive reasoning
- Multiplicative reasoning
- Fractions.

These modules are each designed to last three to four hours, but may last longer if delivered online. This programme will take place across the equivalent of four days.

Who can take part?

This programme is designed for primary teaching assistants who are supporting maths, and who would like to develop their specialist knowledge for teaching maths. It will be particularly relevant for new TAs or TAs that have not received maths-specific training.

What are the benefits?

Participants will:

- ✓ review their practice as a result of the sessions and make specific adaptations to support the pupils they are working with
- ✓ understand the key elements that form number sense, forms of addition and subtraction, forms of multiplication and division, and forms of fractions, including precise language, structures and representations.

What is the cost?

The SKTM – Primary Teaching Assistants project is fully funded by the Maths Hubs Programme so is free to participating schools.

Covid-19 Recovery

Many positive lessons were learnt from online collaboration during Maths Hubs activity in 2020/21. These will be built upon in 2021/22.

As the impact of the pandemic hopefully recedes, the result for Maths Hubs work will be a blend of face-to-face activities and frequent online collaboration.



The wider context

It has long been recognised that maths teaching is enhanced when the teachers are confident about the subject matter. Seabourne's work over the period of 2004-06 found that Subject Knowledge Enhancement (SKE) courses led to 'improvements in subject knowledge, attitude, understanding and confidence'. Gibson, O'Toole, Dennison & Oliver's (2013) report on SKE courses across all subjects in which SKE is offered finds that levels of subject knowledge and confidence in the subject are dramatically enhanced on completion of SKE courses.

Maths Hubs work with a range of partners to ensure there is effective professional development of new teachers of maths in primary and secondary schools (and other maths classroom practitioners), so that they have the specialist knowledge required to support the learning of maths. This project is offered to impact on developing the subject knowledge and pedagogical knowledge for all practitioners teaching and supporting the learning of maths.

Expectations of participants and their schools

Participants and their schools must be able to commit to the full academic year's programme. This is likely to involve some face-to-face activity alongside online collaboration.

About the Hub

London Central and NW Maths Hub works across the London boroughs of Barnet, Camden, Enfield, Haringey, Islington and Westminster. It is one of 40 Maths Hubs in England, working together within the Maths Hub Programme, which began in 2014. You can read more about the Maths Hub [here](#).

A Work Group brings senior leaders and maths teachers together multiple times during the school year, rather than just being a one-off course. There is a common aim which is to research, develop, practise and recognise best practice. The emphasis is on collaborative, exploratory, evidence-based professional development.

If you are interested in this Work Group, please register [here](#). We will then be able to send you the relevant dates and details of this Work Group for 2021-22.

