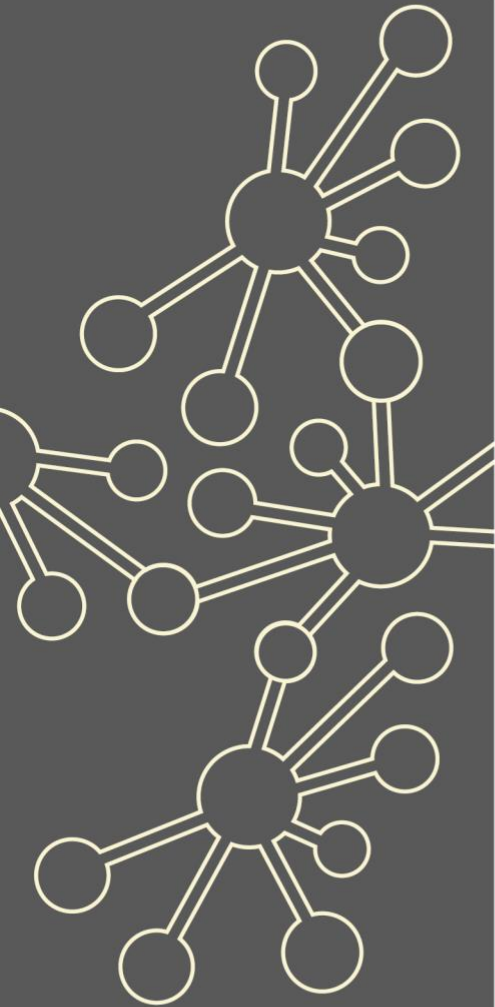


Strengthening Partnerships with ITT Providers

Maths Hubs Network Collaborative Projects 2021/22

NCP21-24



Outline

Now in its fourth year, this project provides opportunities to explore and share current mathematical developments and consider their implications for ITT providers and Maths Hubs in order to help trainees transition into teaching mathematics effectively.

Details

What is involved?

Activity will be in the form of Work Groups, and may include working across hub boundaries and collaborating in larger regions.

Models for working could include:

- local/regional network meetings that lead to additional partnership work focusing on the issues the network group want to focus on, to strengthen the understanding of teaching for mastery pedagogy
- local/regional network meetings that review principles of teaching for mastery, share ITT units, adapt them for local use, and review where they sit in the institution's maths programme
- developing the expertise of mentors to support trainees in mastery-related maths lesson design
- observation of Mastery Specialists' lessons with follow up discussions about the mastery principles in order to identify specific developments for the overall ITT maths programme in light of current school-based practice.

Generally three to four days of direct work will be undertaken, with planning and evaluation time additional to this.

Who can take part?

Lead participants in this programme will be from the ITT community; they should be directly involved in ITT with a responsibility for maths. It is expected that these participants will represent the various ITT providers across the hub region so may include HEI, SCITT and School Direct, and represent different phases of ITT including EYTS, QTS (primary and secondary), and post-16.

What are the benefits?

Participants and their institutions will:

- ✓ deepen understanding of, and involvement in, the work of their local Maths Hub and the Maths Hubs Network, along with their knowledge of the principles of teaching for mastery and how they relate to classroom practice
- ✓ review practices and programmes, aiming to ensure trainees have some understanding of lesson design informed by mastery principles
- ✓ develop planning which includes reference to the principles of teaching for mastery and is further enhanced by opportunities to observe Mastery Specialists' lessons with a follow up discussion.

What is the cost?

The Strengthening Partnerships with ITT Providers project is fully funded by the Maths Hubs Programme so is free to participating institutions.

Covid-19 Recovery

Many positive lessons were learnt from online collaboration during Maths Hubs activity in 2020/21. These will be built upon in 2021/22.

As the impact of the pandemic hopefully recedes, the result for Maths Hubs work will be a blend of face-to-face activities and frequent online collaboration.



The wider context

One of the strategic goals of the Maths Hubs Programme is for Maths Hubs to work with a range of partners to ensure there is effective initial training of new teachers of maths in primary and secondary schools, so that they have the specialist knowledge required to support the learning of maths. By 2023, the aim is for all engaged ITT programmes to include initial preparation for teaching for mastery.

These Work Groups are therefore needed to support sustained best practice networks between ITT providers and local hubs with a focus on teaching for mastery. These Work Groups are also needed to support the hubs in identifying the mathematical needs of their early career teachers, which informs their local offer.

Expectations of participants and their schools

Institutions must be able to commit to the full academic year's programme. This is likely to involve some face-to-face activity alongside online collaboration.

About the Hub

London Central and NW Maths Hub works across the London boroughs of Barnet, Camden, Enfield, Haringey, Islington and Westminster. It is one of 40 Maths Hubs in England, working together within the Maths Hub Programme, which began in 2014. You can read more about the Maths Hub [here](#).

A Work Group brings senior leaders and maths teachers together multiple times during the school year, rather than just being a one-off course. There is a common aim which is to research, develop, practise and recognise best practice. The emphasis is on collaborative, exploratory, evidence-based professional development.

If you are interested in this Work Group, please register [here](#). We will then be able to send you the relevant dates and details of this Work Group for 2021-22.

